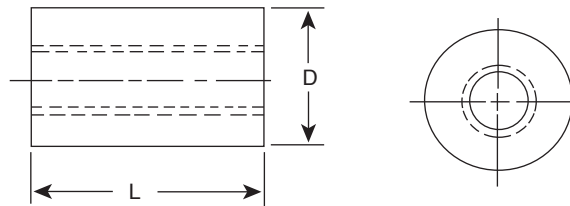


# NYLON TAPPED SPACERS

561-TSP1, 561-TSP2, 561-TSP3, 561-TSP4, 561-TSP4, 561-TSP5, 561-TSP6, 561-TSP7, 561-TSP8, 561-TSP9, 561-TSP10, 561-TSP11, 561-TSP12, 561-TSP13, 561-TSP14, 561-TSP15, 561-TSP21, 561-TSP36, 561-TSP37, 561-TSP38, 561-TSP39, 561-TSP40, 561-TSP41, 561-K61.50-T

Date Last Revised: 7/9/15

DIMENSIONS: in



Molded from Type 6/6" Nylon and then machine tapped, these spacers are low cost insulators that can be used in many electrical applications.

Note: On threaded spacers 3/4" and longer, the tap is 3/8" from each end and not continuous through.

MOUSER STOCK NO.	Description	Package Qty	D	L	Tapped
561-TSP1	M01 4-40 X 1/4 OD X 1/4 LONG	1000	0.250	0.250	4-40
561-TSP2	M01 4-40 X 1/4 OD X 3/8 LONG	1000	0.250	0.375	4-40
561-TSP3	M01 4-40 X 1/4 OD X 1/2 LONG	1000	0.250	0.500	4-40
561-TSP4	M01 4-40 X 1/4 OD X 3/4 LONG	500	0.250	0.750	4-40
561-TSP5	M01 4-40 X 1/4 OD X 1 LONG	N/A	0.250	1.000	4-40
561-TSP6	M01 6-32 X 1/4 OD X 1/4 LONG	1000	0.250	0.250	6-32
561-TSP7	M01 6-32 X 1/4 OD X 3/8 LONG	1000	0.250	0.375	6-32
561-TSP8	M01 6-32 X 1/4 OD X 1/2 LONG	1000	0.250	0.500	6-32
561-TSP9	M01 6-32 X 1/4 OD X 3/4 LONG	500	0.250	0.750	6-32
561-TSP10	M01 6-32 X 1/4 OD X 1 LONG	N/A	0.250	1.000	6-32
561-TSP11	M01 8-32 X 1/4 OD X 1/4 LONG	1000	0.250	0.250	8-32
561-TSP12	M01 8-32 X 1/4 OD X 3/8 LONG	1000	0.250	0.375	8-32
561-TSP13	M01 8-32 X 1/4 OD X 1/2 LONG	1000	0.250	0.500	8-32
561-TSP14	M01 8-32 X 1/4 OD X 3/4 LONG	500	0.250	0.750	8-32
561-TSP15	M01 8-32 X 1/4 OD X 1 LONG	500	0.250	1.000	8-32
561-TSP21	M01 10-32 X 3/8 OD X 1/4 LONG	1000	0.375	0.250	10-32
561-TSP36	M01 4-40 X 1/4 OD X 5/8 LONG	1000	0.250	0.625	4-40
561-TSP37	M01 4-40 X 1/4 OD X 7/8 LONG	500	0.250	0.875	4-40
561-TSP38	M01 6-32 X 1/4 OD X 5/8 LONG	500	0.250	0.625	6-32
561-TSP39	M01 6-32 X 1/4 OD X 7/8 LONG	500	0.250	0.875	6-32
561-TSP40	M01 8-32 X 1/4 OD X 5/8 LONG	500	0.250	0.625	8-32
561-TSP41	M01 8-32 X 1/4 OD X 7/8 LONG	N/A	0.250	0.875	8-32
561-K61.50-T	M01 6-32 X 1/4 OD X 1-1/2 LONG	N/A	0.250	1.500	6-32

RoHS Compliant